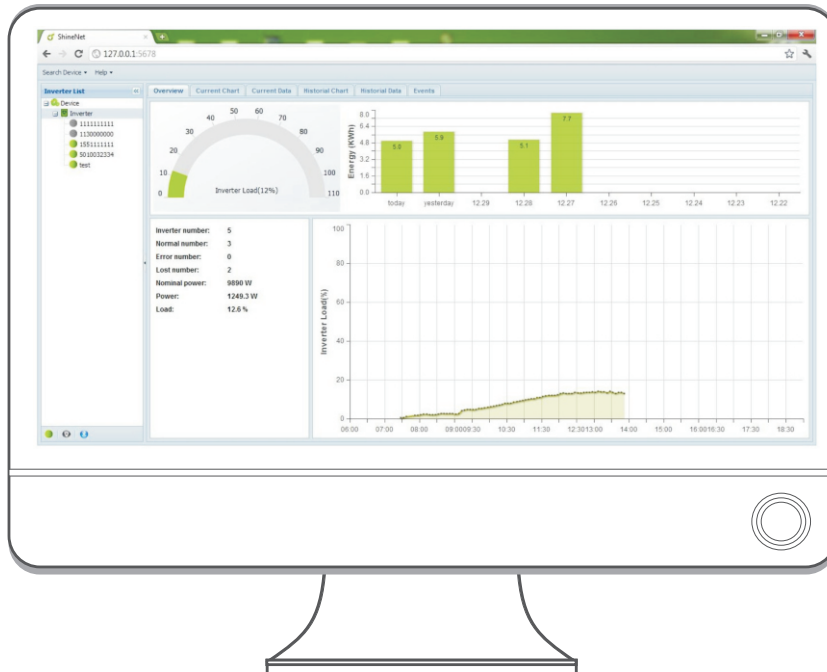


ShineNet

ShineNet provides an optimum solution to the system monitoring for residential customers. The free software is adapted to monitor the inverters from Growatt via RS232 or Bluetooth module. With the special designed function and friendly compact UI, it offers users a top-level intuitive graphical view of the plants under management and brings unprecedented user experience.

Features

- ▶ Monitor and record current data of inverters
Record historical data
- ▶ Monitor and record event information of inverter
- ▶ Connect computer and inverter via RS232 and RS485 port (wire connection) or Bluetooth module (wireless connection)
- ▶ Remote access available for local area network



Datasheet

Languages

Available languages English, German, Chinese

System requirements

Supported operating systems Windows XP(SP2), Windows Vista(32-bit and 64-bit), Windows 7(32-bit and 64-bit)

Communication

Inverter communication Bluetooth/RS232

Max.number of devices Bluetooth : 7 / RS232:1

Protocol Modbus RTU

Hardware (minimum requirement)

Processor P3 800MHz(XP), P4 1GHz(vista, windows7)

Main memory 512MB(XP), 1GB(vista, windows7)

Free hard drive space 102MB (87MB JRE/15MB application)

Resolution 1024x768 pixels

Plant information

Plant overview Quick overview of all inverter status, generated power, inverter load and other important data

Current plant data Displayed by intuitive chart or detailed list

Historical plant data Displayed by intuitive chart or detailed list

Events Rapid warning of event with pop-up dialog box, direct viewing of recorded events with highlight

Device information

Device overview Easily get access to all inverter information

Device setting Simple configuration for power management

Device data Detailed information of specified inverter including historical and current data

Events Rapid warning of event with pop-up dialog box, direct viewing of recorded events with highlight